

PLATFORM SUPPLY
VESSEL

PLATFORM SUPPLY VESSEL
UT 755 XL

Name of Vessel

C102 - F D INDOMITABLE (delivered 2011)

C103 - F D HONORABLE (delivered 2011)

C104 - F D REMARKABLE (delivered 2012)

C105 - F D INCOMPARABLE (delivered 2012)

Type of Vessel

Platform Supply Vessel

Class notation

R.I.Na: C~~1~~; ~~A~~AUT-UMS; ~~D~~DYNAPOS AM-R; FIRE FIGHTING SHIP 1;
WATER SPRAYING SYSTEM; OIL RECOVERY SHIP; ~~S~~SUPPLY VESSEL;
UNRESTRICTED NAVIGATION; COMF-VIB A; COMF-NOISE C; MON-SHAFT

Design

ROLLS-ROYCE MARINE

Builder

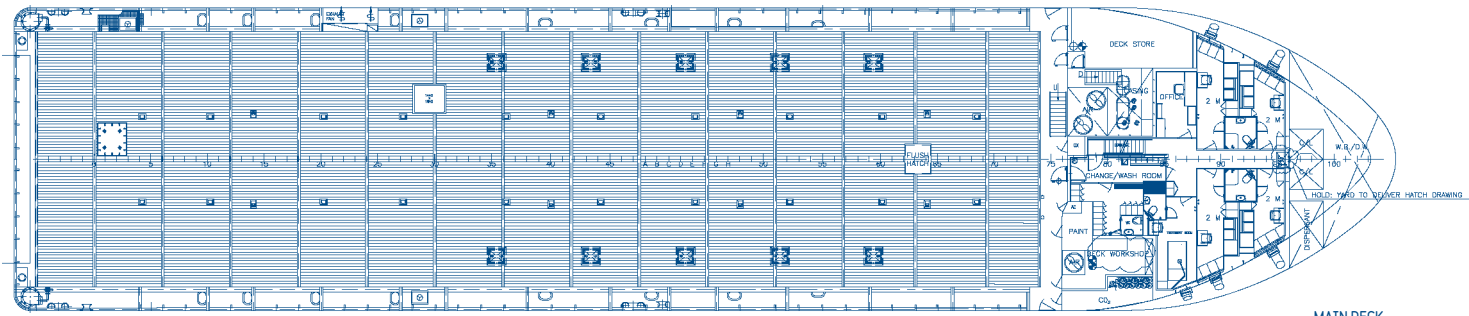
ROSETTI MARINO S.p.A.

Owner and operator

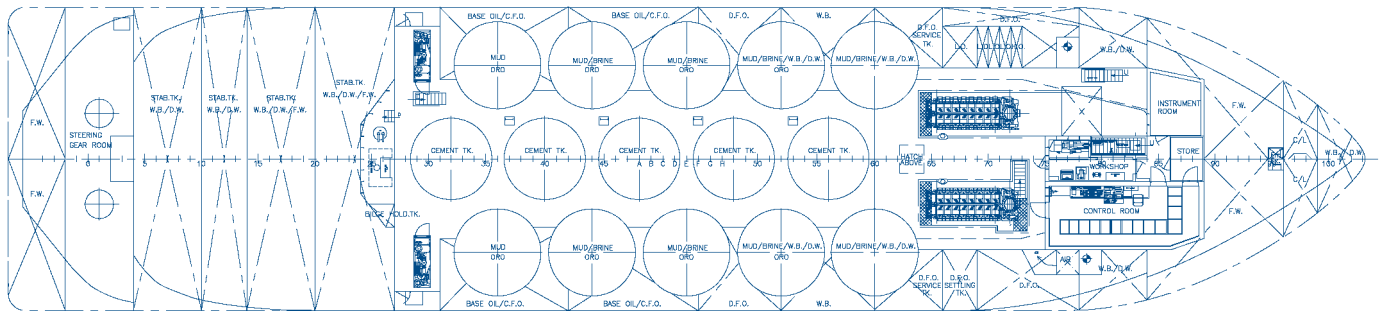
F.LLI D'AMATO S.p.A.



PLATFORM SUPPLY VESSEL | UT 755 XL



MAIN DECK



TWEEN DECK

MAIN PARTICULARS		
Length overall		74.97 m
Breadth, moulded		16.00 m
Length between perpendiculars		66.80 m
Maximum draught		5.85 m
Depth		7.00 m
Dead weight		3150 t
Gross tonnage		2215 GT
Displacement at full load		5000 t
Deck cargo / Deck area		1600 t / 716 m ²
Accommodation		20 persons

TANK CAPACITIES		
Fuel Oil		925 m ³
Water Ballast		1385 m ³
Drill Water		1220 m ³
Fresh Water		850 m ³
Base Oil		280 m ³
Dry Bulk		320 m ³
Liquid Mud (s.g. 2.5)		1000 m ³
ORO / Brine		800 m ³

MACHINERY / PROPULSION		
Main engines - GE Marine 16V228		2 x 2790 kW
Shaft Alternators		2 x 2250kVA
Main Diesel Generator		2 x 370 kVA
Emergency Generator		1 x 150 kVA
Thrusters, 2 fwd Ulstein type TT1650		each 660 kW
Thrusters, 2 aft Ulstein type TT1650		each 590 kW
Propellers		2 x CP - ø 2900 mm
Rudders		High lift flap
Fire-Fighting system		FiFi-1
Dynamic Positioning		DP2
Deck crane		1 x 6 t at 16 m.

CARGO DISCHARGE PUMPS		
1 off WB/DW e/pump		150 m ³ /h - 9 bar
1 off Fuel oil/ORO e/pump		200 m ³ /h - 9 bar
1 off Fresh water e/pump		200 m ³ /h - 9 bar
2 off Liquid mud/ORO e/pumps		100 m ³ /h - 18 bar
1 off Brine e/pump		100 m ³ /h - 18 bar
1 off Base oil e/pump		90 m ³ /h - 9 bar

PERFORMANCES		
Speed		14.5 knots
Fuel consumption - Economy speed		25.0 t/24h at 14.5 kn
		15.9 t/24h at 13 kn
		12.3 t/24h at 11 kn
		9.8 t/24h at 9 kn



Rosetti Marino Headquarters
 Via Trieste, 230 - 48122 Ravenna - Italy
 tel. +39 0544 878 111 - fax +39 0544 878 188
 e-mail: rosetti@rosetti.it - www.rosetti.it



ROSETTI MARINO
Group of Companies

PLATFORM SUPPLY VESSEL

PLATFORM SUPPLY VESSEL UT 755 XLS

Name of Vessel

C108 - F D UNBEATABLE (delivered 2013)
C109 - F D UNTOUCHABLE (delivered 2013)

Type of Vessel

Platform Supply Vessel

Class notation

R.I.Na: C α , α AUT-UMS; α DYNAPOS AM-R; FIRE FIGHTING SHIP 1;
WATER SPRAYING SYSTEM; OIL RECOVERY SHIP; SUPPLY VESSEL;
UNRESTRICTED NAVIGATION; COMF-VIB-A; COMF-NOISE-C;
MON-SHAFT; INWATERSURVEY

Design

ROLLS-ROYCE MARINE

Builder

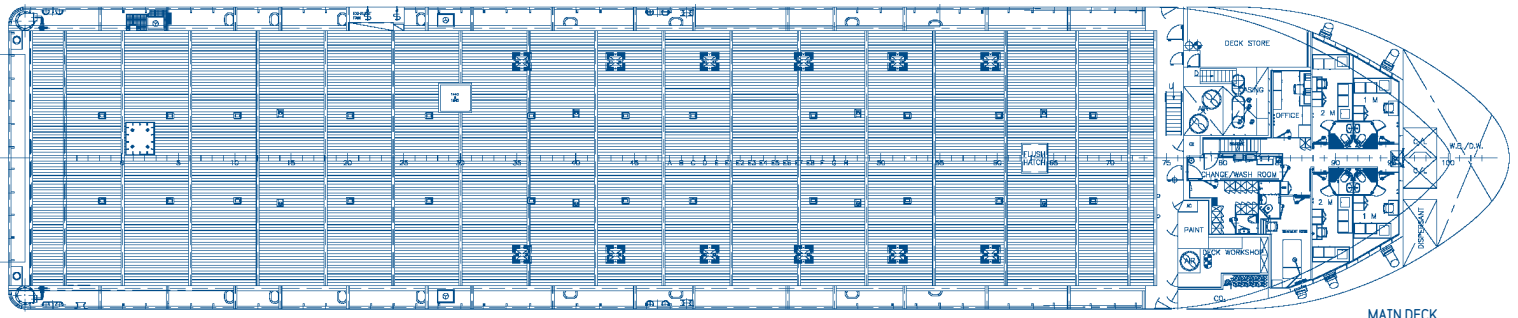
ROSETTI MARINO S.p.A.

Owner and operator

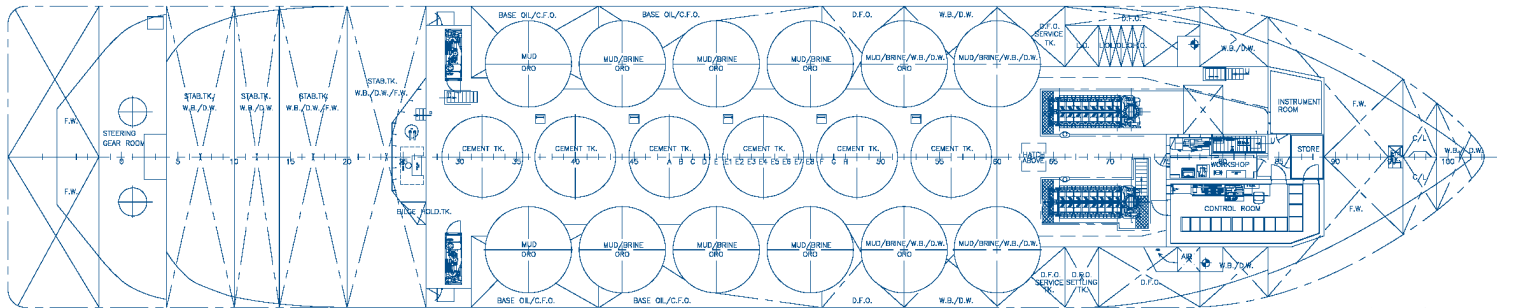
F.LLI D'AMATO S.p.A.



PLATFORM SUPPLY VESSEL | UT 755 XLS



MAIN DECK



TWEEN DECK

MAIN PARTICULARS		
Length overall	82.00 m	
Breadth, moulded	16.00 m	
Length between perpendiculars	71.80 m	
Maximum draught	5.82 m	
Depth	7.00 m	
Dead weight	3400 t	
Gross tonnage	2380 GT	
Displacement at full load	aprox. 5500 t	
Deck cargo / Deck area	1700 t / 808 m ²	
Accommodation	18 persons	

TANK CAPACITIES		
Fuel Oil		1080 m ³
Water Ballast		1350 m ³
Drill Water		1200 m ³
Fresh Water		900 m ³
Base Oil		370 m ³
Dry Bulk		384 m ³
Liquid Mud (s.g. 2.5)		1200 m ³
ORO / Brine		1000 m ³

MACHINERY / PROPULSION		
Main engines - GE Marine 16V228	2 x 2790 kW	
Shaft Alternators	2 x 2250kVA	
Main Diesel Generator	2 x 370 kVA	
Emergency Generator	1 x 150 kVA	
Thrusters, 2 fwd Ulstein type TT1650	each 660 kW	
Thrusters, 2 aft Ulstein type TT1650	each 590 kW	
Propellers	2 x CP - dia. 2900 mm	
Rudders	High lift flap	
Fire-Fighting system	FiFi-1	
Dynamic Positioning	DP2	
Deck crane	1 x 6 t at 16 m.	

CARGO DISCHARGE PUMPS		
1 off WB/DW e/pump		150 m ³ /h - 9 bar
1 off Fuel oil/ORO e/pump		200 m ³ /h - 9 bar
1 off Fresh water e/pump		200 m ³ /h - 9 bar
2 off Liquid mud/ORO e/pumps		100 m ³ /h - 18 bar
1 off Brine e/pump		100 m ³ /h - 18 bar
1 off Base oil e/pump		90 m ³ /h - 9 bar

PERFORMANCES		
Speed		14.5 knots
Fuel consumption - Dual Frequency System		
Frequency 50 Hz		6.65 t/24h at 9.75 kn 9.43 t/24h at 11.00 kn
Frequency 60 Hz		8.51 t/24h at 9.75 kn 10.52 t/24h at 11.00 kn



Rosetti Marino Headquarters
 Via Trieste, 230 - 48122 Ravenna - Italy
 tel. +39 0544 878 111 - fax +39 0544 878 188
 e-mail: rosetti@rosetti.it - www.rosetti.it



ROSETTI MARINO
Group of Companies

PLATFORM SUPPLY VESSEL

PLATFORM SUPPLY VESSEL UT 755 XL

Name of Vessel

C110 - HIGHLAND KNIGHT (delivered 2013)

C111 - HIGHLAND PRINCESS (delivered 2014)

Type of Vessel

Platform Supply Vessel

Class notation

ABS, ✕A1(E), OFFSHORE SUPPORT VESSEL, ✕AMS, ✕ACCU,
✕DPS-2. (OSR-C), FIRE FIGHTING VESSEL CLASS 1

Design

ROLLS-ROYCE MARINE

Builder

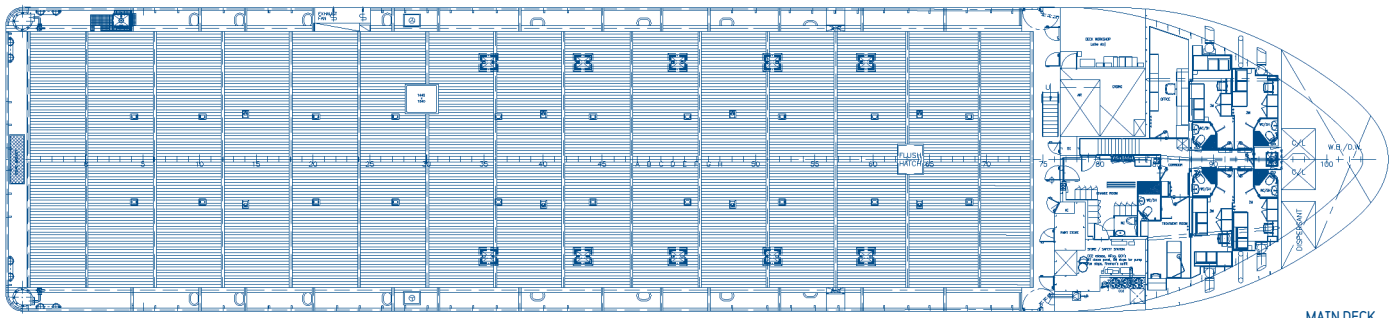
ROSETTI MARINO S.p.A.

Owner and operator

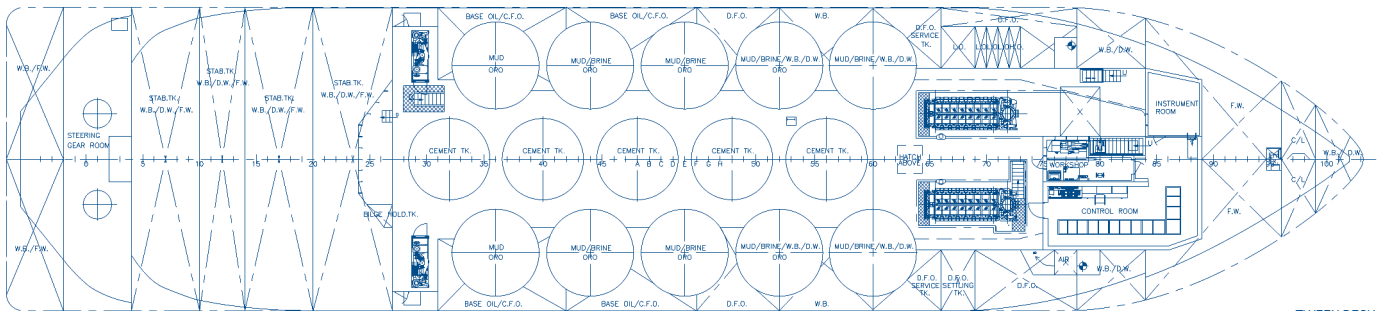
GULF OFFSHORE N.S. LTD.



PLATFORM SUPPLY VESSEL | UT 755 XL



MAIN DECK



TWEEN DECK

MAIN PARTICULARS		
Length overall		74.97 m
Breadth, moulded		16.00 m
Length between perpendiculars		66.80 m
Maximum draught		5.85 m
Depth		7.00 m
Dead weight		3100 t
Gross tonnage		2202 GT
Displacement at full load		approx. 5000 t
Deck cargo / Deck area		1600 t / 716 m ²
Accommodation		24 persons

MACHINERY / PROPULSION		
Main engines - GE Marine 16V228		2 x 2790 kW
Shaft Alternators		2 x 2250kVA
Main Diesel Generator		2 x 370 kVA
Emergency Generator		1 x 150 kVA
Thrusters, 2 fwd Ulstein type TT1650		each 660 kW
Thrusters, 2 aft Ulstein type TT1650		each 590 kW
Propellers		2 x CP - dia. 2900 mm
Rudders		High lift flap
Fire-Fighting system		FiFi-1
Dynamic Positioning		DP2
Deck crane		1 x 6 t at 16 m.

TANK CAPACITIES		
Fuel Oil		925 m ³
Water Ballast		1380 m ³
Drill Water		1380 m ³
Fresh Water		850 m ³
Base Oil		280 m ³
Dry Bulk		320 m ³
Liquid Mud (s.g. 2.5)		1000 m ³
ORO / Brine		800 m ³

CARGO DISCHARGE PUMPS		
1 off WB/DW e/pump		150 m ³ /h - 9 bar
1 off Fuel oil/ORO e/pump		200 m ³ /h - 9 bar
1 off Fresh water e/pump		200 m ³ /h - 9 bar
2 off Liquid mud/ORO e/pumps		100 m ³ /h - 18 bar
1 off Brine e/pump		100 m ³ /h - 18 bar
1 off Base oil e/pump		90 m ³ /h - 9 bar

PERFORMANCES		
Speed		14.5 knots
Fuel consumption - Economy speed		11.5 knots: 11.4 t/day
Highland Knight	80% MCR:	13.9 knots - 20.1 t/day
	100% MCR:	14.55 knots - 24.8 t/day
Highland Princess	80% MCR:	13.9 knots - 20.9 t/day
	100% MCR:	14.65 knots - 27.0 t/day



Rosetti Marino Headquarters
 Via Trieste, 230 - 48122 Ravenna - Italy
 tel. +39 0544 878 111 - fax +39 0544 878 188
 e-mail: rosetti@rosetti.it - www.rosetti.it



ROSETTI MARINO
Group of Companies

PLATFORM SUPPLY VESSEL

PLATFORM SUPPLY VESSEL UT 755 L

Name of Vessel

C63 - ASSO VENTICINQUE (delivered 2004)

Type of Vessel

Platform Supply Vessel with Moon Pool

Class notation

R.I.Na: C~~6~~; ~~HULL~~~~MACH~~; UNRESTRICTED SERVICE; AUT-UMS; DYNAPOS
AMR; FIRE FIGHTING SHIP 1; WATERSPRAY SYSTEM

Design

ROLLS-ROYCE MARINE

Builder

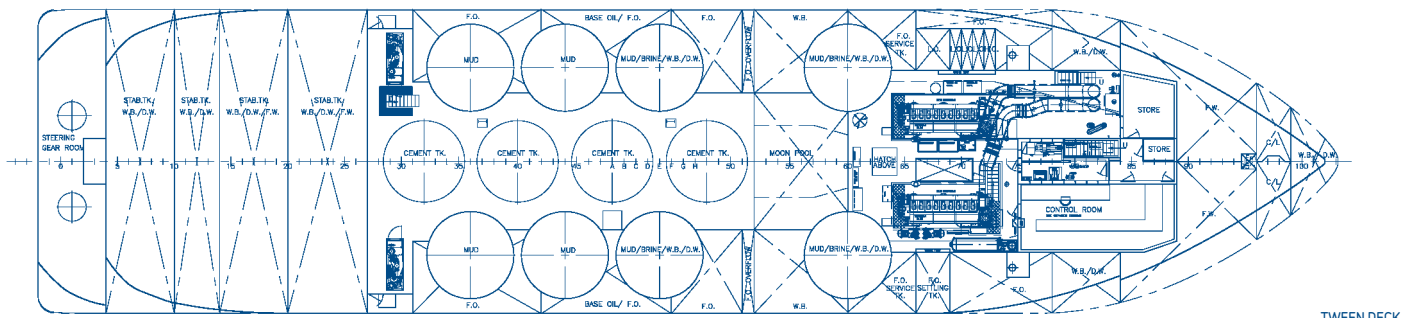
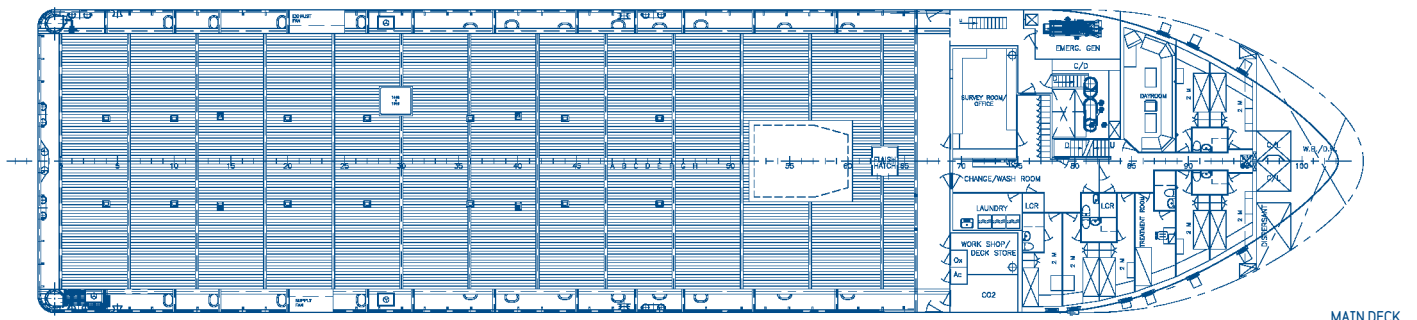
ROSETTI MARINO S.p.A.

Owner and operator

AUGUSTA OFFSHORE S.p.A.



PLATFORM SUPPLY VESSEL | UT 755 L



MAIN PARTICULARS		
Length overall	72.00 m	
Breadth, moulded	16.00 m	
Length between perpendiculars	66.80 m	
Maximum draught	5.85 m	
Depth	7.00 m	
Dead weight	3100 t	
Gross tonnage	2300 GT	
Displacement at full load	3000 t	
Deck Cargo / Deck area	1600 t / 680 m ²	
Accommodation	42 persons	

MACHINERY / PROPULSION		
Main engines - Wartsila 9L26	2 x 2790 kW at 1800 rpm	
Shaft Alternators	2 x 2250 kVA at 1800 rpm	
Main Diesel Generators	2 x 370 kVA	
Emergency Generator	1 x 150 kVA	
Thrusters, fwd Ulstein type 250 TV	2 x 660 kW	
Thrusters, aft Ulstein type 150 TV	2 x 590 kW	
Propellers	2 x CP - dia. 2900 mm - 2730 bhp	
Rudders	High lift flap	
Fire-Fighting System	FiFi-1	
Dynamic Positioning	DP2	
Deck Crane	1 x 6 t at 16 m.	
Moon Pool	5 x 3,8 m2	

TANK CAPACITIES		
Fuel Oil	1020 m ³	
Ballast/Drill Water	1300 m ³	
Fresh Water	840 m ³	
Base Oil	200 m ³	
Dry Bulk	256 m ³	
Liquid Mud (s.g. 2.5)	960 m ³	
Brine	960 m ³	

CARGO DISCHARGE PUMPS		
1 off WB/DW e/pump	150 m ³ /h - 9 bar	
1 off Fuel oil e/pump	200 m ³ /h - 9 bar	
1 off Fresh water e/pump	200 m ³ /h - 9 bar	
2 off Liquid mud/ORO e/pumps	100 m ³ /h - 18 bar	
1 off Brine e/pump	75 m ³ /h - 18 bar	
1 off Base oil e/pump	90 m ³ /h - 9 bar	

PERFORMANCES			
Speed	14.5 knots	Fuel consumption - max.	22 t/day



Rosetti Marino Headquarters
 Via Trieste, 230 - 48122 Ravenna - Italy
 tel. +39 0544 878 111 - fax +39 0544 878 188
 e-mail: rosetti@rosetti.it - www.rosetti.it



ROSETTI MARINO
Group of Companies

PLATFORM SUPPLY VESSEL

PLATFORM SUPPLY VESSEL UT 755 L

Name of Vessel

C83 - F D INVINCIBLE (delivered 2006)
C84 - F D INCREDIBLE (delivered 2007)
C88 - F D RELIABLE (delivered 2007)
C89 - F D IRRESISTIBLE (delivered 2008)

Type of Vessel

Platform Supply Vessel

Class notation

R.I.Na: C~~8~~; ~~A~~AUT-UMS; ~~D~~DYNAPOS AM-R; FIRE FIGHTING SHIP 1;
WATER SPRAYING SYSTEM; OIL RECOVERY SHIP; ~~S~~SUPPLY VESSEL;
UNRESTRICTED NAVIGATION; COMF-VIB A; COMF-NOISE C; MON-SHAFT

Design

ROLLS-ROYCE MARINE

Builder

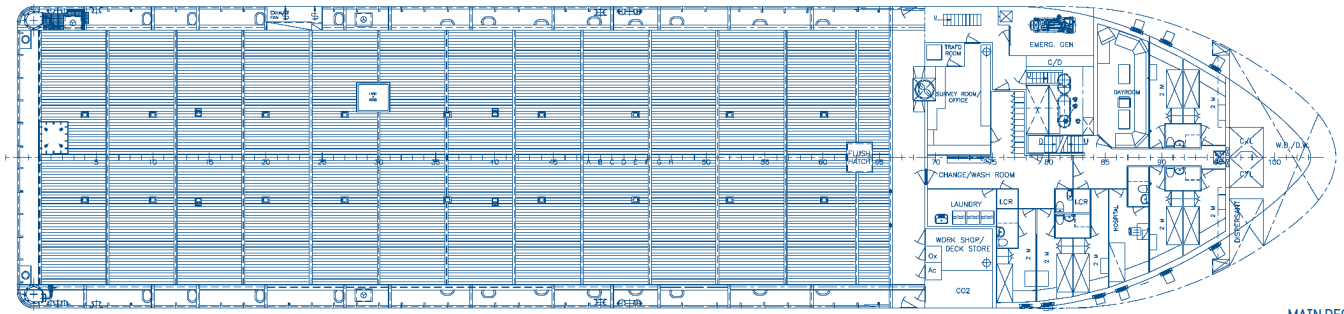
ROSETTI MARINO S.p.A.

Owner and operator

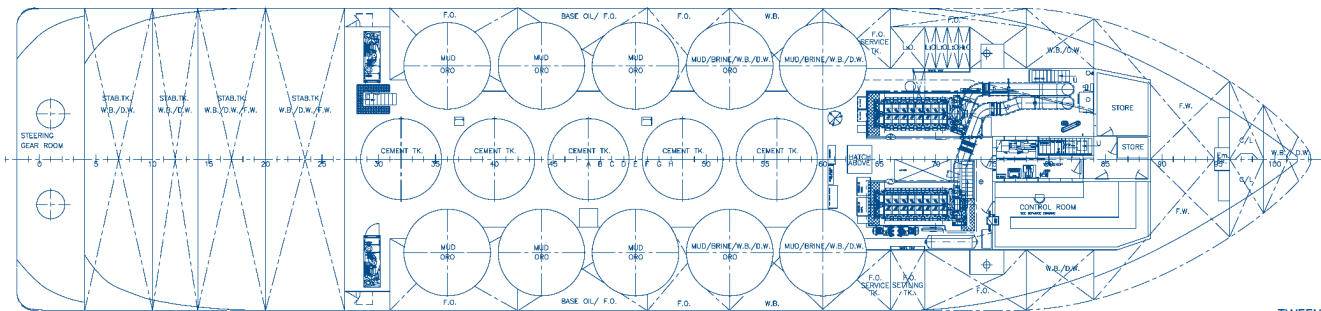
F.LLI D'AMATO S.p.A.



PLATFORM SUPPLY VESSEL | UT 755 L



MAIN DECK



TWEEN DECK

MAIN PARTICULARS

Length overall	72.00 m
Breadth, moulded	16.00 m
Length between perpendiculars	66.80 m
Maximum draught	5.82 m
Depth	7.00 m
Dead weight	3184 t
Gross tonnage	2305 GT
Displacement at full load	4900 t
Deck cargo / Deck area	1600 t / 612 m ²
Accommodation	49 persons

TANK CAPACITIES

Fuel Oil	925 m ³
Water Ballast	1400 m ³
Drill Water	1260 m ³
Fresh Water	785 m ³
Base Oil	200 m ³
Dry Bulk	320 m ³
Liquid Mud (s.g. 2.5)	1000 m ³
Brine	400 m ³
ORO	800 m ³

MACHINERY / PROPULSION

Main engines - Wartsila 9L26/GE 12V228	2 x 2790 kW
Shaft Alternators - Marelli	2 x 2250kVA
Main Diesel Generator	2 x 370 kVA
Emergency Generator	1 x 150 kVA
Thrusters, 2 fwd Ulstein type TT1650	each 660 kW
Thrusters, 2 aft Ulstein type TT1650	each 590 kW
Propellers	2 x CP - ø 2900 mm
Rudders	High lift flap
Fire-Fighting system	FiFi-1
Dynamic Positioning	DP2
Deck Crane	1 x 6 t at 16 m.

CARGO DISCHARGE PUMPS

1 off WB/DW e/pump	150 m ³ /h - 9 bar
1 off Fuel oil/ORO e/pump	200 m ³ /h - 9 bar
1 off Fresh water e/pump	200 m ³ /h - 9 bar
2 off Liquid mud/ORO e/pumps	100 m ³ /h - 18 bar
1 off Brine e/pump	75 m ³ /h - 18 bar
1 off Base oil e/pump	90 m ³ /h - 9 bar

PERFORMANCES

Speed	14.5 knots
Fuel consumption - Economy speed	25.0 t/24h at 14.5 kn
	15.9 t/24h at 13 kn
	12.3 t/24h at 11 kn
	9.8 t/24h at 9 kn



Rosetti Marino Headquarters
Via Trieste, 230 - 48122 Ravenna - Italy
tel. +39 0544 878 111 - fax +39 0544 878 188
e-mail: rosetti@rosetti.it - www.rosetti.it